



# PROJECT SNAPSHOT



## HULCHER EXCAVATOR AND CREW PERFORM LOAD ADJUSTMENT OF STEEL PIPES

### Project Description

A load of steel pipes had shifted during transit and needed to be reloaded so it would be properly balanced. Hulcher Services deployed a Caterpillar® 325D excavator and crew. The excavator repositioned and restacked the pipes into a safe configuration. The crew then secured the pipes with the proper bindings, in accordance with AAR standards, including AAR Open Top Loading Rules. The project was completed successfully, on time and on budget.

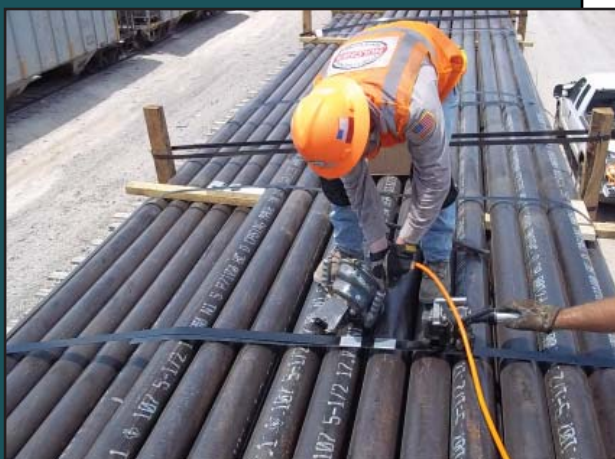
Railroads and industrial facilities across the country trust Hulcher's experience to perform tie-down, transfer, load adjustment and load reduction projects like this each year.

### Hulcher's Transfer Services

Hulcher's specialized equipment, such as portable self-contained pneumatic conveyors, hi-rail vacuum trucks, telescoping forklifts, telehandlers, grapple trucks, excavators and cranes, can respond quickly to virtually any transfer situation. Our crews and equipment are strategically located around the United States so we can deploy to almost any location. We can perform load adjustments and transfers as independent projects or as part of derailment or disaster response projects.

### More Information

For more information about Hulcher's transfer / load adjustment services, visit [www.hulcher.com](http://www.hulcher.com) or call 800-637-5471.



FIND MORE INFORMATION ABOUT HULCHER'S WIDE RANGE OF TRANSFER / LOAD ADJUSTMENT SERVICES AND A MAP OF OUR LOCATIONS AT [WWW.HULCHER.COM](http://WWW.HULCHER.COM)